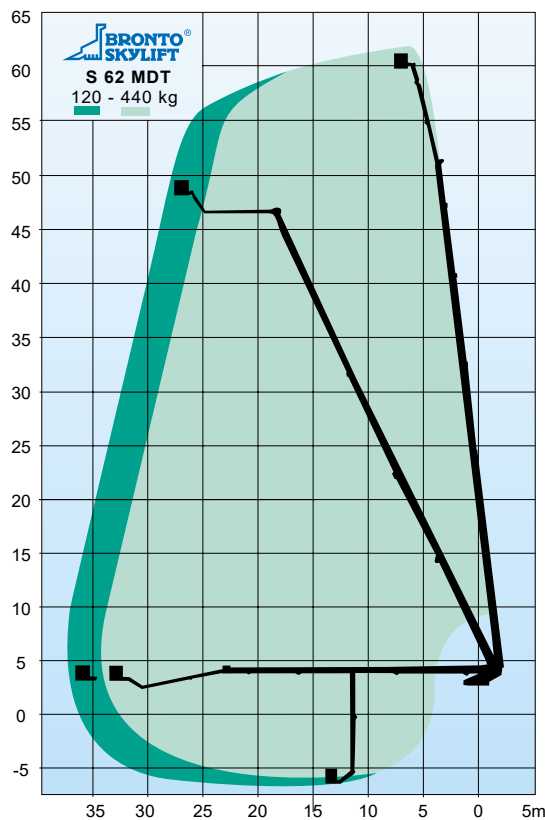


TECHNICAL SPECIFICATION

| | |
|---|---------------------|
| Working height | appr. 62.0 m |
| Height to working cage floor | appr. 60.0 m |
| Max working outreach | appr. 34.5 - 37.0 m |
| Safe working load | 440 - 120 kg |
| Rotation, continuous | 360° |
| Transport height (depending on chassis) | 3.8 m |
| Transport length (depending on chassis) | 13.6 m |
| Transport width | 2.5 m |
| Working cage | 0.9 x 2.2 x 1.1 m |
| GVW | 32 ton |

STANDARD FEATURES

- Multiple working cage system
- Bronto+ ; variable jacking / outreach / cage load system
- Bronto auto-jacking
- Identical control stations in the working cage and at the turntable with joystick control levers
- Back light illumination of the control panels
- Turntable control station with platform and seat
- Ramp system and movement speed slow-down for all boom movements
- Safety switches for extension chains
- Automatical interlock system
- Continuous rotation
- Back-up system for hydraulics by battery pump and bleed down
- Outrigger control panel at the rear of vehicle
- Intercom system
- Wind speed gauge
- Aluminium decking with steps
- CE and EMC Certification
- Mountable onto various standard chassis



Alterations reserved.